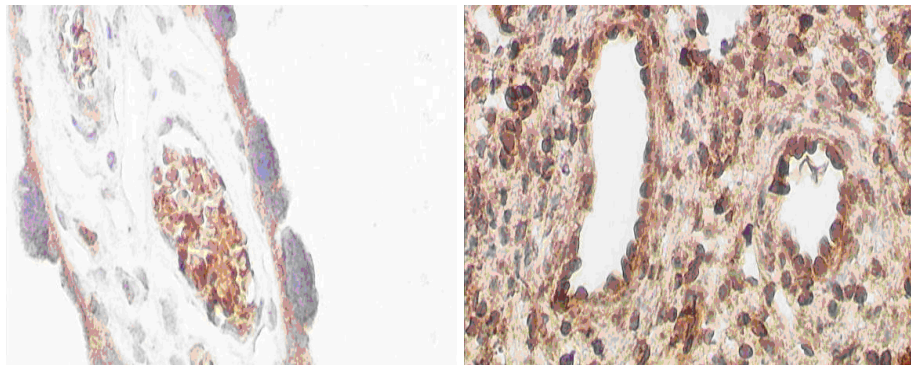


---

## Product Specification Sheet

---

|                      |  |
|----------------------|--|
| <b>Description:</b>  | ANTI HUMAN VEGF  |
| <b>Product No.:</b>  | 01-204   |
| <b>Lot No.:</b>      |  |
| <b>Antigen:</b>      | Synthetic peptide: APMAEGGGQNHHEVVKF conjugated to KLH, corresponding to aa 27-43 of Human VEGF.   |
| <b>Host Animal:</b>  | Chicken White Leghorn  |
| <b>Purification:</b> | This antibody was purified by PEG precipitation followed by ammonium sulphate precipitation.   |
| <b>Titer:</b>        | 1-3 mg specific antibody/ml. Positive in direct ELISA against peptide at 1:2700.   |
| <b>Form:</b>         | Liquid. Chicken IgY fraction in 0.9% NaCl, 0.1% NaN <sub>3</sub> .   |
| <b>Storage:</b>      | +4 to +8° C  |
| <b>Performance:</b>  | IHC, paraffin embedded sections: Positive staining of placenta (left) and endometrium (right) at dilution 1:1,000. Results shown are from experiment using the affinity purified antibody. |



Approved/Date \_\_\_\_\_

### Conditions

The products listed herein are for in vitro use only and should not be administered to humans or used for any drug purpose. The information presented is believed to be accurate. The information and products are offered without warranty or guarantee since the ultimate conditions of use and the variability of the materials are beyond our control. We cannot be responsible for patent infringement or other violations that may occur with the use of these products.